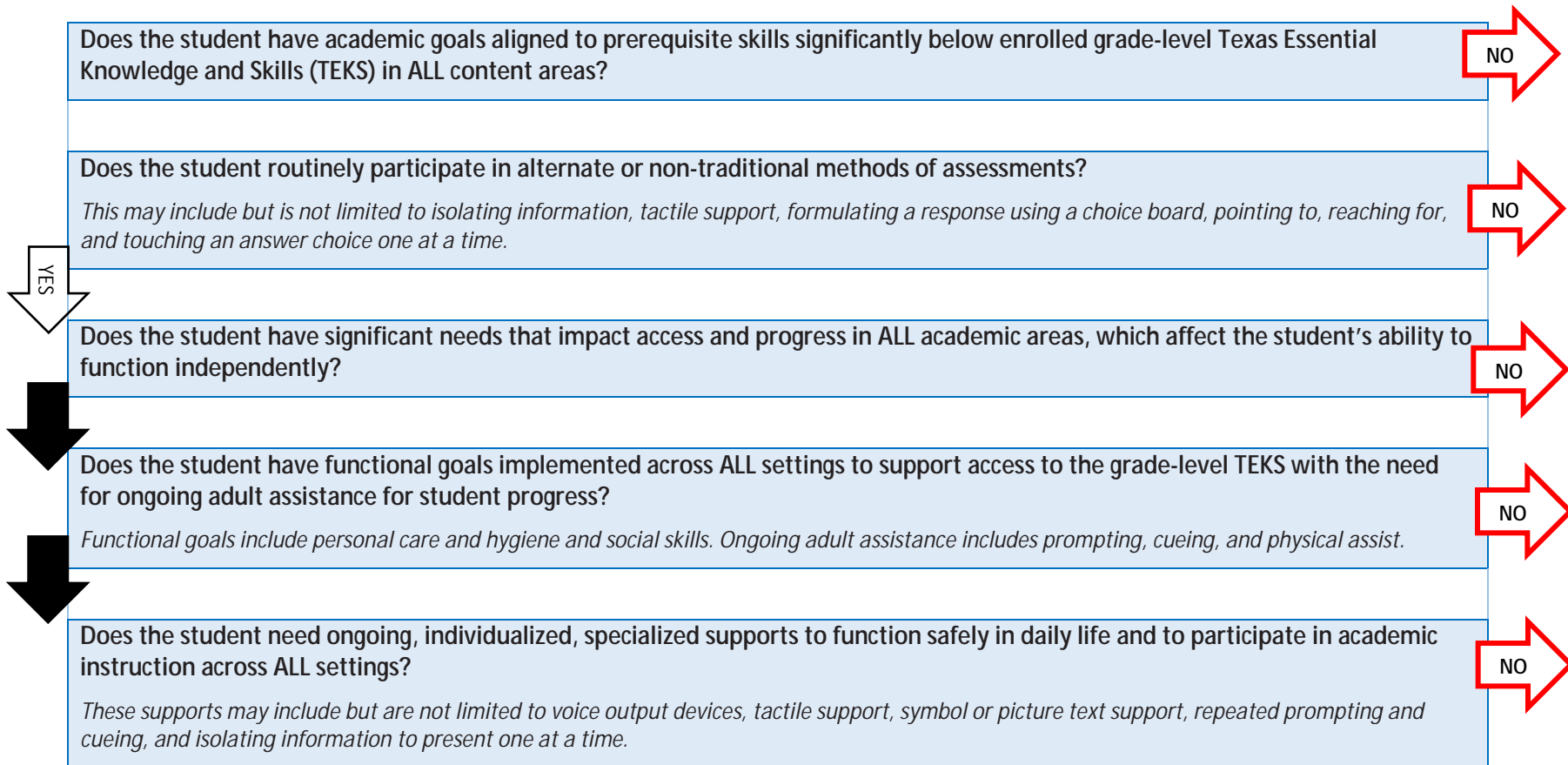


Companion Document

STAAR Alternate 2 Participation Requirements



This document should be used in conjunction with the State of Texas Assessments of Academic Readiness (STAAR®) Alternate 2 Participation Requirements. Admission, review, and dismissal (ARD) committees are responsible for determining state assessment eligibility by reviewing the student's unique educational and adaptive needs. Sources of evidence for a student's eligibility for STAAR Alternate 2 are on page 2 of this document.



The student is **NOT** eligible for STAAR Alternate 2 and must be assessed with STAAR. Members of the ARD committee should be trained on STAAR accommodations to make informed assessment decisions.

Companion Document

Does the student require ongoing adult assistance to initiate, perform, and complete self-care routines?

Ongoing adult assistance includes prompting, cueing, and physical assist. The student's requirement of adult assistance is NOT due to a physical disability alone but rather to the student's significant cognitive disability. Self-care routines include, but are not limited to, feeding, dressing, toileting, and personal hygiene. The ARD committee should consider all areas of self-care to determine if the student requires adult assistance because he or she has not mastered self-care routines.

b e c 0 5 2 4 m

This student is eligible to participate in STAAR Alternate 2 upon completion of the state required ARD assessment decision-making processes, including marking all the assurances on the student's STAAR Alternate 2 participation requirements document.